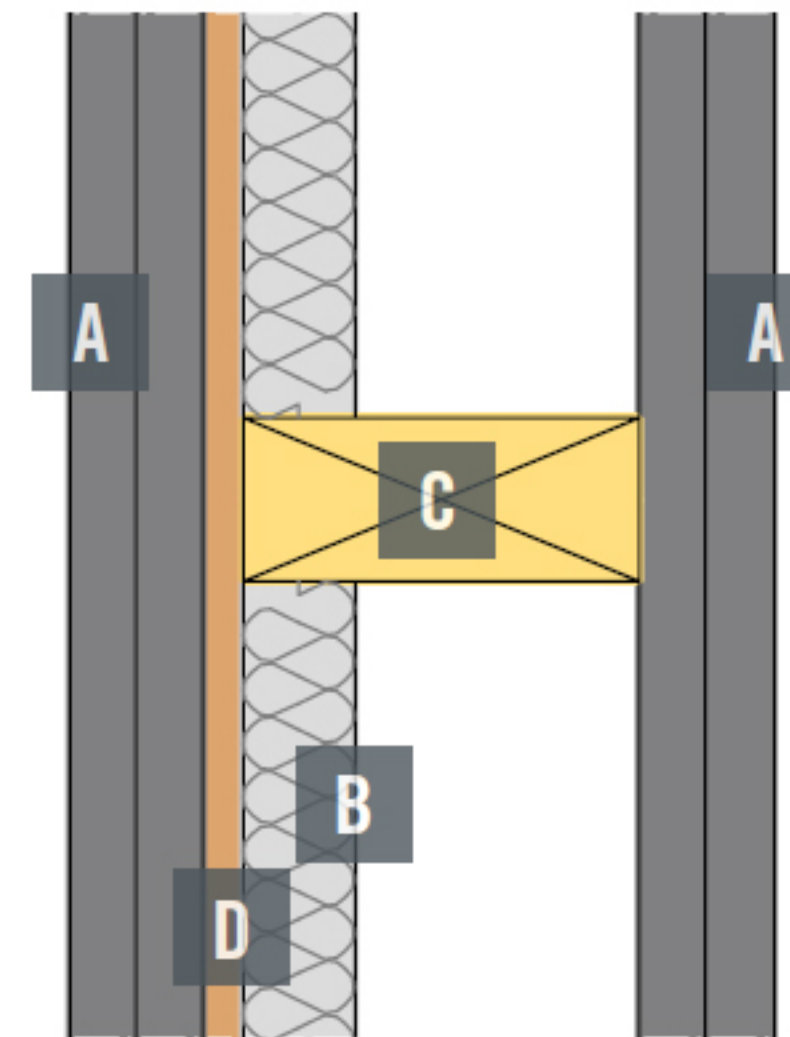


# INTERNAL PARTITIONS

## LOAD BEARING WALL

### LOAD BEARING WALL

Load bearing walls are supplied as part of the main superstructure and require fire compliance comparable with the external wall. Acoustic compliance is determined by the walls relationship to other rooms, within the building. The table below shows the various performance levels available.



- A** Single or double layer plasterboard either side with various specifications and widths
- B** Min 25mm acoustic partition roll between studs where required
- C** 89mm stud width
- D** 9mm OSB sheathing as structurally required