

INTERNAL PARTITIONS

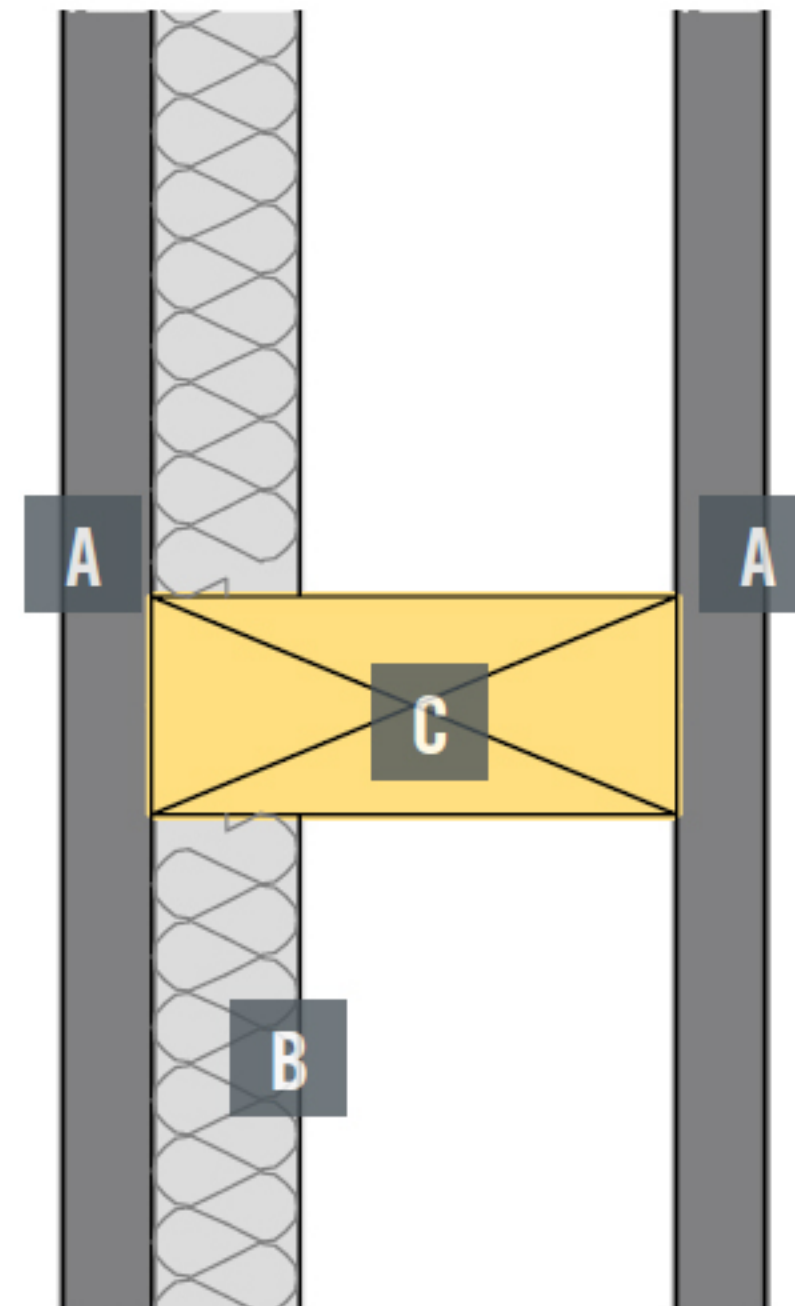
INTERNAL NON LOAD BEARING WALL

INTERNAL NON LOAD BEARING WALL

Internal non load bearing walls do not form part of the structural carcass and are supplied and pre-loaded into the building, as the main superstructure is erected. Partitions do not require preservative treatment, as they are installed in a low risk classification for internal use.

We can install these as part of the erection service offered. This is common place in England and Wales where the dry lining sequence requires non load bearing partitions to be erected tight to the structural carcass.

In Scotland, the practise is to allow plasterboard to slip through, which reduces, timber content, plasterboard cutting and waste, in addition to speeding up the fit out process.



- A** Single layer plasterboard either side with various specifications and widths
- B** Min 25mm acoustic partition roll between studs where required
- C** 63mm or 89mm stud widths